



1

06

1994 MARTIN EBERLE, O.T (LOVE PARADE)

**WHAT DO YOU WANT TO CREATE**

**TO (DE)CONSTRUCT?**

**BERLIN STANDS FOR MOVEMENT, CULTURE, EXCHANGE & COHESION. THE CITY HAS BECOME A METROPOLIS OF ART, DIVERSITY & INSPIRATION. BUT THE CHOICE OF OPEN SPACES HAS BECOME SMALL.**

**WITH OUR 1-06 PLATFORM, WE HAVE CREATED SOMETHING THAT PERFECTLY CAPTURES THE SPIRIT OF THE CITY AGAIN. WE WANT TO GIVE SOMETHING BACK TO THE PEOPLE WHO HAVE SOMETHING TO GIVE - AND BRING TOGETHER WHAT BELONGS TOGETHER: POETS AND THINKERS, COLLECTORS & ARTISTS, BUSINESSES & FREE SPIRITS, MUSIC & LITERATURE.**

**WE ARE A FEMALE DRIVEN ART SPACE OF INTIMACY, ENCOUNTERS & INTERACTION THROUGH CURATED FORMATS & STRONG PARTNERS. OUR GOAL IS TO CREATE A LIVELY & DYNAMIC ENVIRONMENT WHERE ARTISTS, CREATIVES & STAKEHOLDERS WORK TOGETHER TO CREATE NEW APPROACHES TO CULTURAL LIFE IN BERLIN.**

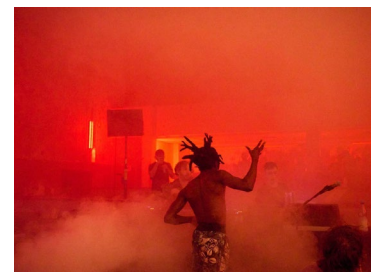
**1—06**

**A PLACE THAT CREATES CULTURAL VALUE:  
STUDIES & EXPERIMENTS, INSTEAD OF RESULTS.**

**OUR APPROACH TO DESIGN IS ROOTED IN MEANINGFUL HISTORICAL ARCHITECTURES, WHICH WE BRING TO LIFE THROUGH INTERACTIVE EXPERIENCES. WE CREATE DIALOGUES THAT DOCUMENT AND BRING PEOPLE TOGETHER, WHO MAY NOT OTHERWISE MEET. OUR INTERDISCIPLINARY CULTURAL LAB INTEGRATES A FIRST-OF-ITS-KIND GALLERY, OUR LAB & A SECRET BAR. WE CREATE GATHERINGS OF ART, LITERATURE, MUSIC & CULINARY EXPERIENCES TO ENCOURAGE EXPLORATION & EXCHANGE OF IDEAS.**

**TODAY MARKS THE BEGINNING OF OUR PRIVATE & INVITATION-ONLY 1-06 PROGRAM. IF YOU'D LIKE TO BE PART OF OUR JOURNEY AS AN ARTIST, OWNER OF A PLACE FOR EXPERIMENTS, POTENTIAL INVESTOR, OR HELPING HAND, PLEASE CONTACT US THROUGH:  
ANJA@1-06.DE**

**JOIN US IN CELEBRATING THE SPIRIT OF BERLIN!**





Nr. 66, 67

WITH ACT 1, WE CONNECT AND REMEMBER THE FORCES THAT  
HAVE CHANGED HISTORIES AND WILL CONTINUE TO DO SO. THESE EMOTIONS DRIVE  
PEOPLE AND COLLECTIVES TO ACHIEVE GREATNESS AND INSPIRE REVOLUTION.

THE EXHIBITION IS HOUSED IN A FORMER BATTERY FACTORY, LATER A WORLD-WAR-II HOSPITAL,  
NOW ABANDONED FOR OVER THREE DECADES. THIS  
SPACE, WITH ITS WEATHERED FACADES AND SHATTERED  
WINDOWS, HAS BEEN TRANSFORMED INTO AN IMMERSIVE  
1-06 WORLD. THE EXHIBITION "IN-BETWEEN-SPACES," SET IN A HISTORICAL THEATRE,  
EXPLORES BERLIN'S DYNAMIC HISTORY AND CULTURAL TRANSFORMATION THROUGH THE  
ADAPTIVE REUSE OF VACANT BUILDINGS. HISTORICAL ARCHITECTURE OF BERLIN,  
OPENING A DIALOGUE BETWEEN GENERATIONS.

# (IN)BETWEEN SPACES

WITH OUR FIRST EXHIBITION WE WANT TO REFLECT ON THE FORCES THAT  
HAVE SHAPED HISTORY AND CONTINUE TO INFLUENCE US TODAY. THESE EMOTIONS DRIVE  
US TO ACHIEVE GREAT THINGS, OVERCOME OBSTACLES, AND EXPLORE NEW PATHS. IN THESE  
TURBULENT TIMES, WE WANT TO GIVE SPACE TO THESE FEELINGS. FOLLOWING REUNIFICATION,  
YOUNG CREATIVES IN EAST BERLIN REPURPOSED  
EMPTY SPACES INTO ARTISTIC HUBS LIKE GALLERIES,  
STUDIOS, AND CLUBS, SYMBOLIZING ARTISTIC FREEDOM  
AND INNOVATION. THE EXHIBITION ADDRESSES THEMES OF IDENTITY, BELONGING, AND  
TRANSFORMATION, HIGHLIGHTING BERLIN'S EVOLUTION AS AN ART METROPOLIS.  
IT COMBINES HISTORY AND MODERNITY TO REVITALIZE THE SPIRIT OF THE CITY  
THROUGH ARTISTIC EXPRESSION AND HUMAN RELATIONSHIPS.

MARTIN EBERLE°ERNST BURKEL  
ALEXEI CERRONE  
CHRISTINE FENZL°JULIJA GOYD  
MARJOLEINE BOONSTRA  
MICHAEL SELLMANN  
MONTY RICHTHOFEN  
YASMINA DEXTER°TOM NEUBAUER  
ANNA NEZHAYA°JADE CASSIDY  
SHORT CIRCUITS

**SOCIAL STUDIES & EXPERIMENTS**

**1—06**

**INSTEAD OF RESULTS**

**WE ARE HONORED TO PRESENT A CURATED SELECTION  
OF WORKS BY A DISTINGUISHED GROUP OF ARTISTS  
WHOSE CONTRIBUTIONS ARE CENTRAL TO THIS  
UNIQUE CULTURAL JOURNEY.**



# MARTIN EBERLE

MARTIN EBERLE'S PHOTOGRAPHS CHRONICLE BERLIN'S ICONIC CLUB SCENE OVER A DECADE, CAPTURING THE RAW, EMPTY INTERIORS THAT DEFINE ITS LEGENDARY, IMPROVISED COOLNESS. HIS IMAGES JUXTAPOSE RUN-DOWN FACADES WITH CRAFTED INTERIORS, ENCAPSULATING THE SPIRIT OF THESE TRANSIENT SPACES. THE PHOTOS, TAKEN FROM 1996 TO 1999, REFLECT THE INTIMATE, DYNAMIC ENERGY OF THE SCENE THAT SHAPED BERLIN-MITTE'S NIGHTLIFE.

**E-WERK AUSSEN**  
1996  
92.5 X 111.5  
€3.800



**E-WERK INNEN**  
1997  
92.5 X 111.5 CM  
€3.800



**FROM THE SERIES  
TEMPORARY SPACES  
C-PRINT ON ALU-DIBOND  
(FRAMED)**

**103 MONBIJOUSTRASSE INNEN**  
2001  
111.5 X 92.5 CM  
€3.800



**DIRT AUSSEN**  
2001  
111.5 X 92.5 CM  
€3.800



**DIRT INNEN**  
2001  
111.5 X 92.5 CM  
€3.800





**TRESOR AUSSEN**  
1996  
111.5 X 92.5 CM  
€3.800

**TRESOR INNEN 1**  
1997  
111.5 X 92.5 CM  
€3.800

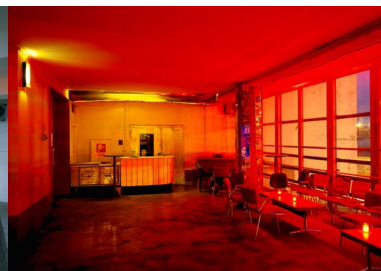
**TRESOR INNEN 2**  
1997  
111.5 X 92.5 CM  
€3.800

FROM THE SERIES  
TEMPORARY SPACES  
C-PRINT ON ALU-DIBOND  
(FRAMED)

**GALERIE BERLINTOKYO AUSSEN**  
1996  
111.5 X 92.5 CM  
€3.800

**GALERIE BERLINTOKYO INNEN**  
1997  
111.5 X 92.5 CM  
€3.800

**MARIA INNEN**  
1998  
111.5 X 92.5 CM  
€3.800





O.T. (LOVE PARADE)  
1994

40 X 50 CM (FRAMED)  
INK JET AUF PHOTO RAG  
€215

80 X 100 CM (FRAMED)  
INK JET AUF PHOTO RAG  
€1.950

320 X 400 CM  
PRINT AUF BAUSTELLENPLANE  
€5.950



O.T. (LOVE PARADE)  
1994

40 X 50 CM (FRAMED)  
INK JET AUF PHOTO RAG  
€960

80 X 100 CM (FRAMED)  
INK JET AUF PHOTO RAG  
€1.950

320 X 400 CM  
PRINT AUF BAUSTELLENPLANE  
€5.950



**DANCEFLOOR**  
1998  
50 X 60 CM (FRAMED)  
INK JET ON MUSEO MAX  
€1.080



**FRIEDRICH, LARS, R'N'ROLL**  
1997  
50 X 60 CM (FRAMED)  
C-PRINT ON ALU-DIBOND  
€1.080  
320 X 400 CM  
PRINT AUF BAUSTELLENPLANE  
€5.950



**JEANS TEAM VOLKSBUHNE**  
1997  
50 X 60 CM (FRAMED)  
INK JET ON MUSEO MAX  
€1.080



**LAMBADA**  
1998  
50 X 60 CM (FRAMED)  
INK JET ON MUSEO MAX  
€1.080



**MIDGET**  
1997  
50 X 60 CM (FRAMED)  
INK JET ON MUSEO MAX  
€1.080



**WESTBAM**  
1997  
50 X 60 CM (FRAMED)  
INK JET ON MUSEO MAX  
€1.080

**FROM THE SERIES  
GALERIE BERLINTOKYO**

**LETZTER ABEND**  
1999  
60 X 50 CM (FRAMED)  
INK JET ON MUSEO MAX  
€1.080



THE ESSENTIAL FORMAL ELEMENT IN ERNST BURKEL'S INSTALLATION, MULTIMEDIA AND PHOTOGRAPHIC WORKS IS LIGHT AS ILLUSTRATOR, INDICATOR AND NARRATOR. AND SOMETIMES, WHEN THE PHOTOS ALLOWED IT, THE OLD HORACE CAME INTO PLAY IN A MODIFIED FORM: "IF THE "PICS" ARE RIGHT, THE WORDS SLIP IN".

MORE AT: [WWW.ERNSTBURKEL.COM](http://WWW.ERNSTBURKEL.COM)



# ERNST BURKEL

DEUTSCHE JUGEND—WHO AND WHERE ARE YOU?  
2024

A TRIPTYCHON OF 3 MOVEABLE PARTS  
DEUTSCHE JUGEND 1 & 2  
MIRROR  
120X80CM  
INKJET ON ALU-DIBOND  
FRAMED, ON ELEMENTS OF WOODEN DOORS  
€9.000  
SINGLE PHOTO (FRAMED)  
€3.500

# ALEXEI CERRONE



## SWINGS

**THE ARTIST'S WORK EVOKES A CHILLING INTERSECTION BETWEEN INDUSTRIAL PRECISION AND THE ARCHITECTURE OF CONFINEMENT, EACH PIECE STANDING AS AN OMINOUS MONUMENT TO CONTROL AND ISOLATION.**

**WITH A SCENOGRAPHIC APPROACH, THE SCULPTURES COMMAND A SPACE THAT FEELS BOTH STERILE AND CHARGED WITH UNSPOKEN NARRATIVES, CHALLENGING THE VIEWER TO CONFRONT THE HARSH REALITIES THEY SUGGEST.**

**THESE WORKS TRANSCEND MERE MATERIALITY, BECOMING POTENT SYMBOLS OF POWER, SURVEILLANCE, AND THE HUMAN CONDITION IN A WORLD TEETERING ON THE EDGE OF DYSTOPIA.**

SINCE 1994 / 1995 CHRISTINE FENZL IS WORKING AS AN INDEPENDENT PHOTOGRAPHER AND HAD SOLO AND GROUP EXHIBITIONS IN NEW YORK AND BERLIN AND PUBLICATIONS IN MAGAZINES LIKE "DIE ZEIT, LIBERATION, NEW YORK SUNDAY TIMES, VOGUE" ETC. SHE ALREADY RECEIVED VARIOUS AWARDS, SCOLARSHIPS AND ACKNOWLEDGMENTS. IN 2004 HER WORK HAS BEEN SELECTED FOR THE 3RD BERLIN BIENNIAL FOR CONTEMPORARY ART BIENNALE IN SAUDI ARABIA WITH HER LATEST SERIES "WOMEN OF RIYADH".

# CHRISTINE FENZL

LAND IN SONNE  
60 X 60 CM (FRAMED)  
€3.200

BENJAMIN, HELLERSDORF 2015  
CHRISTINE, HELLERSDORF 2014  
STEFFI UND PATRICK, MARZAHN 2016  
MARZAHNER PROMENADE 2019  
CICO UND FINE, HELLERSDORF 2016  
ALICJAS PINK, HELLERSDORF 2016  
ALICJA, HELLERSDORF 2016  
PAWEL, HELLERSDORF 2016  
MEMO ZUHAUSE, MARZAHN 2015  
MARCEL UND PEGGIE, HELLERSDORF 2016  
NELLY ( KATZE), HELLERSDORF 2014  
BENJAMIN ZUHAUSE, HELLERSDORF 2015  
BENJAMINS ZIMMER, HELLERSDORF 2015  
MICHELLE ZUHAUSE, HELLERSDORF 2014  
HELLERSDORF 2008 (WOHNSIEDLUNG)  
HELLERSDORF 2013 (TISCHTENNISPLATTE, HELLERSDORF)  
MAIK, HELLERSDORF 2013  
MELLA UND MAX, LICHTENBERG 2013  
SPRINGPFUHL, MARZAHN 2015

TANKS, BERLIN 1993  
60 X 60 CM (FRAMED)  
€4.500

**PANZER, BERLIN 1993**  
**100 X 100CM, FRAMED**  
**€4.500**





# JULIJA GOYD

JULIJA GOYD WAS BORN 1979 IN VILNIUS, LITHUANIA.  
SHE CURRENTLY LIVES AND WORKS IN BERLIN.  
HER PHOTOGRAPHY WORK WAS FEATURED IN THE BOOK THE NAKED  
& THE NUDE CURATED BY PETER WEIERMAIR AND PUBLISHED IN  
2013 BY STOCKMAL AND MARTEL.

SERIES "THEMSELVES" 2013-2015  
PHOTOGRAPHS FROM THE SERIES "THEMSELVES" ARE CAPTURED  
WITHIN THE PRIVATE SPACES OF MY FRIENDS. THIS SERIES  
EXEMPLIFIES THE CONCEPT OF SPACE AS AN "ONTOLOGICAL  
VESSEL": PEOPLE IN ANONYMOUS NUDITY IN STAGED  
ENVIRONMENTS IN SEARCH OF IDENTITY.



IMPOSSIBLE IS NOTHING  
100 X 150 CM  
INKJECT PRINT  
ON CANSON MAT PAPER  
€ 2.500



AMAZONS OF THE PEN  
100 X 150 CM  
INKJECT PRINT  
ON CANSON MAT PAPER  
€ 2.500



ON PENNSYLVANIA AVE  
100 X 150 CM  
INKJECT PRINT  
ON CANSON MAT PAPER  
€ 2.500



**MONOLOGUE INTERIOR I+II**

**FREE FALL**  
200 X 140 CM  
€ 15.000

**WHO IS MASTER THERE**  
200 X 140 CM  
€ 15.000

**DEVOTION**  
200 X 140 CM  
€ 15.000

**MARJOLEINE BOONSTRA**

**MONOLOGUE INTERIOR I+II\* IS A SERIES OF SEVENTY PHOTOGRAPHS BY MARJOLEINE BOONSTRA. CAPTURED DURING HER GLOBAL TRAVELS SINCE THE 1980S, THESE ABSTRACT IMAGES OF DESERTED PUBLIC SPACES EVOKE A QUIET, FORSAKEN ATMOSPHERE. UNLIKE HER FILMS, WHICH OFTEN DEPICT THE HARSH REALITIES OF WAR, THIS SERIES OFFERS A SERENE REFLECTION ON ANONYMOUS SPACES. BOONSTRA'S CAREFUL USE OF COLOR, LIGHT, AND MOVEMENT FURTHER DETACHES THESE IMAGES FROM REALITY.**

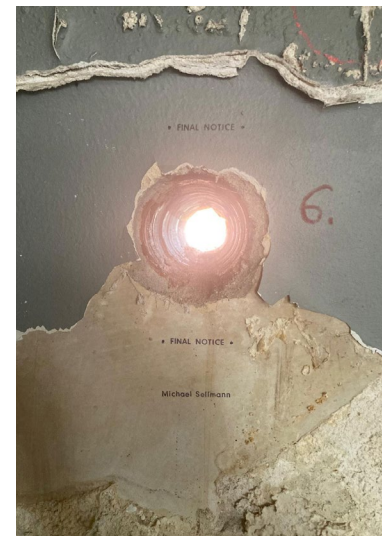


MICHAEL SELLMANN EXPLORES THE HISTORICAL  
IMPLICATIONS OF THE KULTURHAUS BUILDING IN HIS MINIMAL  
SPATIAL INTERVENTIONS.

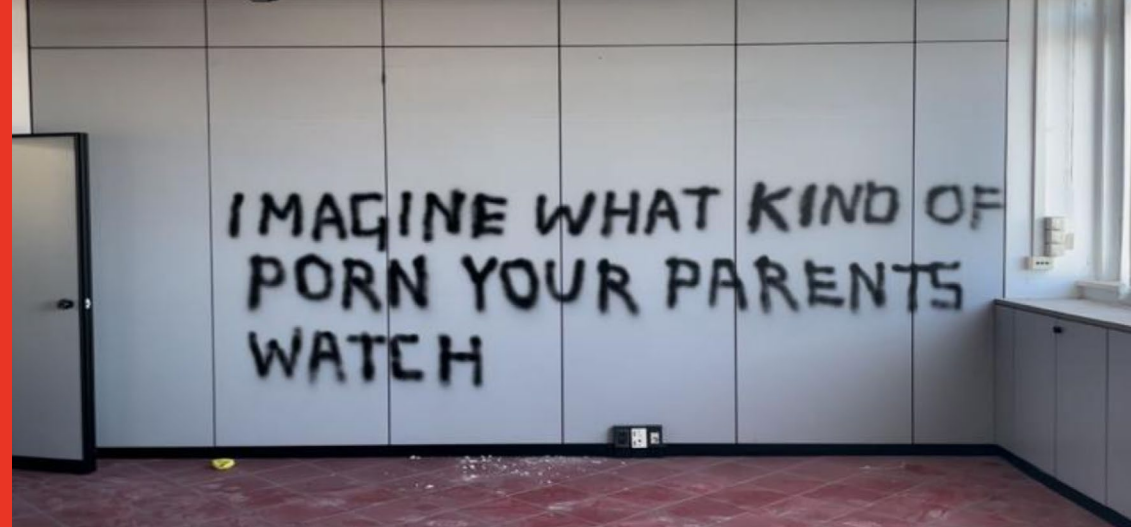
# MICHAEL SELLMANN



DECAY  
FINAL NOTICE



# MONTY RICHTHOFEN & YASMINA DEXTER



UNTIL WE MEET AGAIN  
2024  
CINEMATOGRAPHY MONTY RICHTHOFEN  
SOUND DESIGN YASMINA DEXTER  
EDITOR ENKO BRÖG  
COLORIST ELIAS ASISI

“UNTIL WE MEET AGAIN” IS A SHORT FILM BY MONTY RICHTHOFEN AND YASMINA DEXTER. IN THEIR LATEST WORK, THE TWO ARTISTS EXPLORE PUBLIC AND PRIVATE SPACES AS LIVING CANVASES, IMBUED WITH THE ECHOES OF THOSE WHO HAVE PASSED THROUGH THEM—TIME CAPSULES PRESERVING THE DELICATE AND OFTEN IMPERCEPTIBLE TRACES OF HUMAN PRESENCE, BOTH INTENTIONAL AND ACCIDENTAL. RICHTHOFEN’S VISUAL POETRY IS SEAMLESSLY WOVEN INTO DEXTER’S INTRICATE SOUND WORLD, WHERE IMAGES AND WORDS COALESCE INTO AN IMMERSIVE, SENSUAL TAPESTRY.

THROUGH CONTEMPLATIVE VISUALS AND AN INTRICATELY LAYERED SOUND DESIGN, THE FILM TRANSCENDS TRADITIONAL NARRATIVE TO DELVE INTO THE EPHEMERALITY OF HUMAN NATURE AND THE RELATIONSHIP BETWEEN MEMORY AND DECAY. IT INVITES THE VIEWER TO ENGAGE WITH THE SPACES AS PALIMPSESTS, WHERE VISIBLE AND INVISIBLE HISTORIES OVERLAP, CREATING A TEXTURED DIALOGUE BETWEEN PAST AND PRESENT. IN THIS MEDITATIVE YET INEVITABLE JOURNEY THROUGH TIME, RICHTHOFEN AND DEXTER TRANSFORM THE UNNOTICED AND FORGOTTEN INTO A PROFOUND EXPLORATION OF THE PERMANENCE OF IMPERMANENCE.



# TOM NEUBAUER

IN HIS PHOTOGRAPHIC PORTRAITS, TOM NEUBAUER SENSITIVELY DRAWS AN IDIOSYNCRASY IN TERMS OF LIFESTYLE AND REFERENCE SYSTEM FROM HIS TWO-DECADE, ONCE-A-WEEK JOB AS A BARMAN IN KREUZBERG'S MYSLIWKA BAR AND THE DAYS IN BETWEEN.





BERLIN BASED ARTIST ANNA NEZHNAYA ILLUMINATES THE REMAINING SACRED SPHERES IN OUR CONTEMPORARY LIVES, BLENDING VARIOUS WESTERN SPIRITUAL TRADITIONS AND REFLECTING ON THEIR TRANSFORMATION OVER THE PAST DECADES. NEZHNAYA EXPLORES FEMININE ARCHETYPES AND PROTOTYPES CREATED THROUGHOUT ART HISTORY, PLACING THEM IN RELATION TO LITERATURE AND MYTHOLOGY. HER SKETCHES, RENDERED IN GLASS AND NEON LIGHT, REFERENCE THE COLLECTIVE OBSESSION WITH SMOOTHNESS AND DIGITAL AESTHETICS IN WESTERN SOCIETIES.

FREEDOM  
110X85CM  
WHITE NEON GLASS TUBES  
2022

# ANNA NEZHNAYA





**JADE CASSIDY IS A SOUTH AFRICAN/ GERMAN MULTIDISCIPLINARY ARTIST BASED IN BERLIN. HER ODYSSEY SERVES AS A TESTAMENT TO THE RESILIENCE, BEAUTY, AND WISDOM DEEPLY ROOTED WITHIN THE NATURAL WORLD, INVITING OBSERVERS TO REDISCOVER THE INTERCONNECTEDNESS OF THE HUMAN EXPERIENCE WITH OUR EXISTENTIAL ORIGINS.**

**HER WORKS INTEND TO ILLUMINATE NATURE'S INHERENT QUALITIES OF STRENGTH, GENTLENESS, AND TRANSFORMATIVE PROCESSES, WHICH CAN BE BOTH DESTRUCTIVE AND RESTORATIVE. DRAWING FROM NATURE'S RHYTHMIC PRINCIPLES SHE GIVES EXPRESSION TO THE SUSTAINING CYCLES OF LIFE AND OFFERS A SENSE OF HOMECOMING TO A WAY OF EXISTING WE PERHAPS MAY HAVE LOST SIGHT OF IN AN EVER DIGITALISED CIVILISATION.**



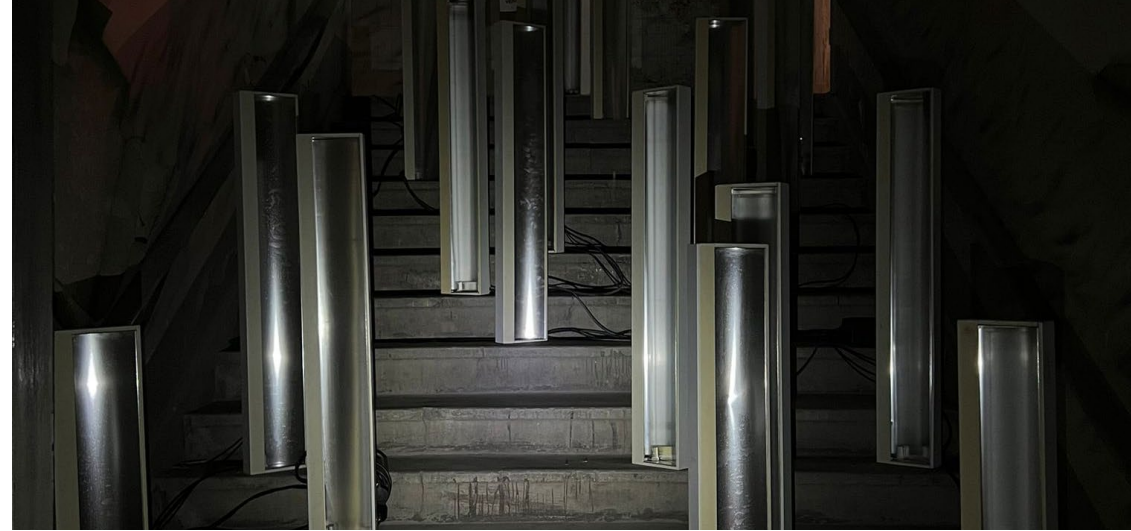
**JADE CASSIDY**

**VERRUCHT UND ZUGENÄHT, 2024  
CERAMIC AND LEATHER  
15 X 13 X 12 CM  
€ 600**

**SHORT CIRCUITS IS A MULTIMEDIA ART COLLECTIVE  
BASED IN LEIPZIG, GERMANY.**

**THE COLLECTIVE FOCUSES ON CREATING EXPERIENCES THAT  
SUBVERT CONVENTIONAL PERCEPTIONS BY SHAPING AND  
TRANSFORMING SPACES THROUGH LIGHT AND SOUND.  
THEY WORK WITH A VARIETY OF DIGITAL AND ANALOG MEDIA TO  
CREATE MULTI-SENSORY INSTALLATIONS, DEVICES,  
AND INTERVENTIONS.**

**FOR TRANSIENTS, SHORT CIRCUITS TRANSFORMED SALVAGED  
CEILING LAMPS INTO AN AUDIO-VISUAL INSTALLATION.  
HARDWIRED AND STAGED, THESE COMMONPLACE READYMADES  
TURN INTO A SYMPHONIC, SPACE-TRANSFORMING SYSTEM.**



## **TRANSIENTS**

**SHORT CIRCUITS**



JULIJA GOYD  
ERNST BURKEL

IN THEIR CINEMATIC NEW YORK ESSAY "TRAPPED IN LIGHT", JULIJA GOYD AND ERNST BURKEL EVOKE THE EVENTS OF SEPTEMBER 11, 2001 AND DOCUMENT THE ANNUAL IRRITATION OF THE "GPS" OF MIGRATORY BIRDS DURING "TRIBUTE IN LIGHT", THE NIGHTLY COMMEMORATION OF THIS TERRIBLE EVENT.



## INVITATION

APPLY FOR COLLABORATIVE (DE) CONSTRUCTION  
1-06 IS HERE TO CREATE, TO DESTROY, TO EXPERIMENT  
AND EXPLORE NEW BOARDERS OF CULTURAL  
COLLABORATION. SPACE, ATELIER, LAB AND UNEXPECTED  
OFF-LOCATIONS AWAIT US AND ARE READY TO BE FILLED  
WITH NEW IDEAS. WOULD YOU LIKE TO CO-CREATE?

GET IN TOUCH WITH US BECAUSE LIFE IS WAY TO SHORT  
FOR WAITING ON THINGS THAT CAN HAPPEN OR NOT  
INSTEAD OF TRYING.

OUR FOCUS FOCUSES ON NURTURING AND DRIVING  
CULTURAL DEVELOPMENT. WE ARE INVITING OUR AUDIENCE  
TO BE PART OF IT. CONTACT US THROUGH:

INFO@1-06.DE

## ACKNOWLEDGMENTS

THIS PROJECT WOULD NOT HAVE COME TO LIFE WITHOUT  
THE SUPPORT OF MANY DEDICATED INDIVIDUALS. WE  
EXTEND OUR DEEPEST GRATITUDE TO EVERYONE WHO  
BELIEVED IN THIS VISION, ESPECIALLY OUR CORE TEAM,  
ANASTASIA DALABERA AND TIMO KAUFHOLD.

BRINGING THIS PROJECT TO LIFE IN A SHORT SPAN WAS  
CRUCIAL FOR US. WE AIMED TO CONNECT GENERATIONS  
AND HIGHLIGHT THE POWER OF VIEWING OUR HISTORY  
THROUGH THE EYES OF THOSE WHO HAVE SHAPED IT,  
PARTICULARLY IN BERLIN, A CULTURAL HUB. THIS IS JUST  
THE BEGINNING OF A DYNAMIC CONCEPT AND A DIALOGUE  
WE WILL FOSTER.

WE ARE ESPECIALLY GRATEFUL TO ERNST BURKEL FOR HIS  
PASSIONATE INVOLVEMENT IN CURATING (IN) BETWEEN  
SPACES WITH US, WHICH BRIDGES GENERATIONS. A  
HEARTFELT THANKS TO THOMAS HAGEMANN FOR HIS  
UNWAVERING BELIEF IN US—HAVING YOU AS OUR BEST  
SPARRING PARTNER IS INVALUABLE.

OUR SINCERE THANKS GO TO HAMEL STIFTUNG AND  
DR. CHRISTIAN HAFERKORN FOR YOUR FULL SUPPORT  
AND DEDICATION, PARTICULARLY IN THE MUSICAL  
PERFORMANCE ASPECT. WE ALSO APPRECIATE THE TEAM  
OF WILHELMINE AND SIMON FOR PROVIDING US WITH THIS  
BEAUTIFUL BUILDING AND FOR YOUR TRUST.  
LASTLY, WE WANT TO THANK ALL OUR FRIENDS WHO  
SUPPORTED US THROUGHOUT THIS JOURNEY.

PHOTOS BY MARTINA THALHOFER.

THANK YOU.

ANJA BIEN & STEFAN DAMNIG

1—06





1—06